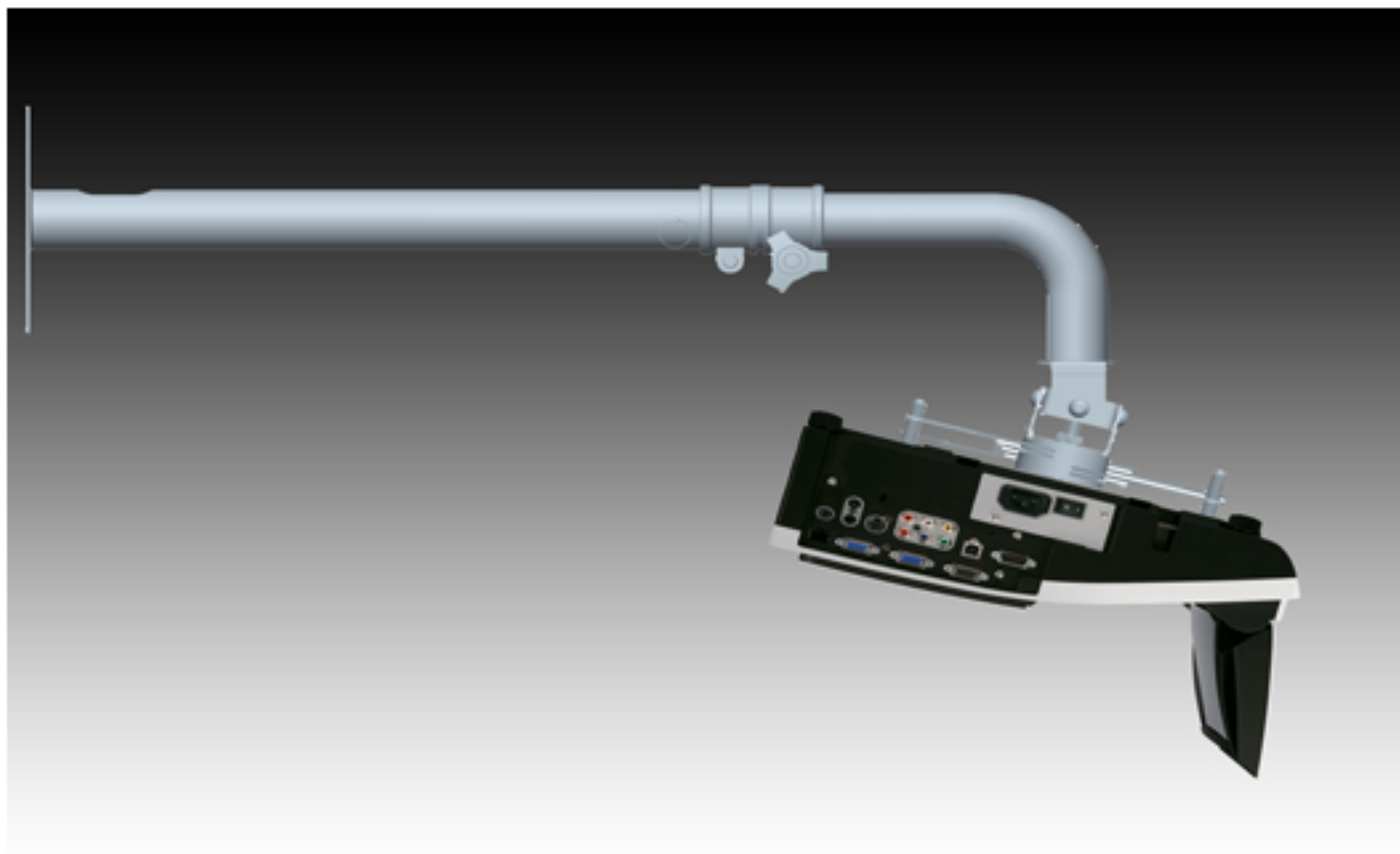


EP 25 Short throw projector wall mount



Specifications

Construction : 50mm tubular steel with steel wall plate
Minimum throw distance : 380mm
Maximum throw distance : 1,500mm

Finish
powder coating in silver or colour of choice or chrome
steel extension arms with black or grey fittings

Key features

A wall mounted short throw projector mount suitable for ultra short throw projectors like the Hitachi and Sanyo and medium throw projectors up to 1.5 metres

Universal "finger" fixings for projector to suit all models and makes (excluding single screw fixings)

A durable steel design with cable management and telescopic length adjustment.

Fully adjustable tilt, swivel, roll and rotate.

Throw distance adjustable from 380mm to 1,500mm to suit screen sizes from 48" to 200"

Tubular steel construction provides a low cost, strong and rigid design that is very easy to install

Available in a choice of colours including chrome pole