

**Edis**



## **EA52 Sound Bar**

**Manual and installation instructions**

Thank you for buying this product. We are confident it will provide you with a long reliable service, but just in case you experience a problem, it is supplied with a 1-year return to base warranty.

This warranty and the product to which it relates applies to the original purchaser only and is not transferable (for the avoidance of doubt, this will be taken from the information held by the appointed national distributor at the point of sale).

The liability of the manufacturer and its appointed service company is limited to the cost of repair and or replacement of the faulty unit under warranty.

This warranty protects you against the following:

- Failure of any components.
- Damage when the product is first removed from its packaging if reported within 24 hours of purchase.

If you find you do have a problem with this product, you should contact the AV reseller you purchased this product from. The original purchaser is responsible for shipment of the product to the manufacturer's appointed service company for repair.

The manufacturer endeavours to replace the faulty parts of the product rather than replacing the whole unit

This warranty does not protect this product against faults caused by abuse, misuse, incorrect installation, unstable or faulty power input, which might be caused by ignoring the guidelines set out in this guide.

## **WARNINGS**

**CAUTION:** To reduce the risk of electric shock, do not remove cover (or back) there are no user-serviceable parts inside. Please refer servicing to qualified service personnel.

Power Supply : 230 volt 50 Hz

## **SAFETY INSTRUCTIONS**

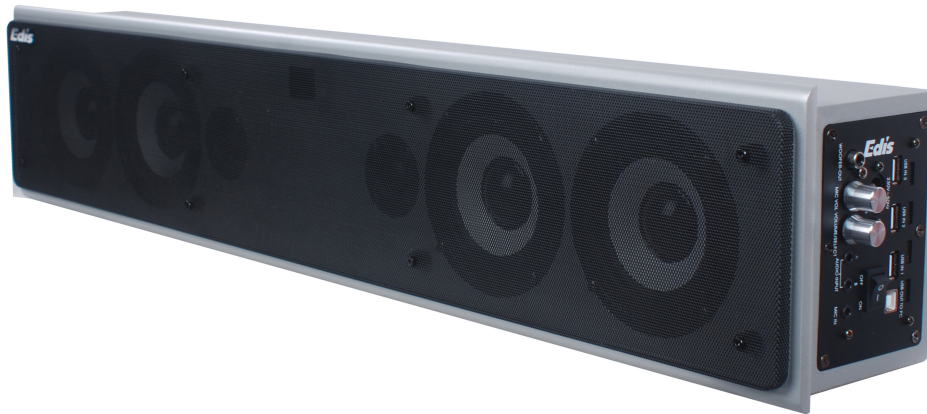
- The product shall be connected to a power supply only of the type described.
- To reduce the risk of fire or electrical shock, do not expose this product to rain or moisture.
- Unplug the product from the wall socket when it is not to be used for a long period of time.
- Adequate care shall be taken so that foreign objects do not fall, or liquids are not spilled into the enclosure through openings.
- Do not remove the cover or back, as there are no user-serviceable parts inside.

## **PACKING LIST**

1. 1x Sound Bar
2. 2x Audio input cables with 3.5 Mini Jack plugs at either end
3. 1x Remote control
4. 1x User Guide

## DESCRIPTION AND FUNCTIONS

EA52 Sound Bar for mounting underneath a Flatscreen LCD, LED or TV or an Interactive whiteboard in a classroom, meeting room or home environment. Used with a sub-woofer it is ideal as a high quality Corporate or Home amplifier



### Key Features

- 36 Watt Amplifier with sub-woofer output and three inputs for a microphone and other equipment such as TV, PC or DVD player
- Full function remote control with Treble, Bass and Volume controls
- The system has secure wall fixings and steel mesh grille as added protection for use in a Classroom environment if required
- Full RoHS compliance and CE approval

### Benefits

- The sound output of this system is enhanced by the use of 6 drivers and a modern wooden speaker enclosure and sub-woofer option.
- The system is easy to wall mount with key hole fixings for first fix and an individual screwed wall fixing to secure the system from accidental abuse
- The system is fully approved product to CE and RoHS standards and so complies with local government and education purchasing

### Basic features

The speaker system is supplied with

- Hand held Remote control
- Wall fixing brackets
- A red power LCD indicator lamp on the side panel indicates when the amplifier system is switched on
- The Main Volume/Power on/off switch is also on the side panel with a separate microphone volume control
- The audio Input selection switch on front panel selects the A or B input from the 3.5 mini jack sockets
- Fan cooling is fitted and needs air circulation at the rear to maintain cooling
- Sub-woofer connection

### Connections – Active Speaker

1. Two 3.5mm mini jack female sockets are provided for PC/DVD audio input to the amplifier
2. A 3.5mm mini jack socket is provided for a microphone input
3. A 2 metre Mains power lead is fitted with a moulded plug



Amplifier Control Panel



Rear View showing mounting brackets

## INSTALLATION GUIDE

1. Fix the wall mounting screws into a suitable wall plug in the wall in a position so that the speaker can be hung on this screw using the “keyhole” wall mounts. Hang the speaker unit on these fixings and mark a hole position on the wall for the position of the security bracket at the base of the speaker unit.
2. Drill and install a suitable wall plug for the security bracket.
3. Hang the speakers using the “Keyhole” wall mount and secure the speaker to the wall with screws into the wall plug position under the speaker.
4. Connect the PC Audio cables with 3.5 mm mini jack connectors into the side of the speaker unit and into the audio sources
5. Check that both the on/off switch and the Volume control on the speaker are switched off. Plug the power cable to the mains supply and switch the supply on.
6. Follow the Operating Instructions below

## OPERATING INSTRUCTIONS

Before connecting the power cord turn the Main volume control fully anti-clockwise to it's off position – you will feel a click.

Select the input you would like to listen to using the Input A or Input B on the selector switch on the amplifier panel on the side of the speaker

Turn on the volume control, the red amplifier light will come on, and adjust the volume control clockwise to increase the output sound level to your preferred level.

**WARNING:** Always turn the unit on and wait for a moment before turning the volume control up. High signals levels can damage the system on startup

The system accepts line-level audio signals from sources such as PCs, Notebooks, CD/DVD players, Minidisc players, iPod, Tuners TV etc and unpowered microphones

## TROUBLE SHOOTING

If the system is not operating correctly, please check the table below: If the problem persists contact your AV reseller immediately and disconnect the system from the power.

<b>Problem</b>	<b>Checks to be made</b>
No Sound from speaker	<ul style="list-style-type: none"><li>• Check that the mains supply is switched on at the wall socket</li><li>• Check that the power switch at the amplifier base panel of the active speaker is switched on</li><li>• Check that the volume control is switched on and red light showing. If no red light shows the mains power source may be faulty or the fuse blown in the power plug</li><li>• Check that the A and B selector switch is switched to the correct input</li><li>• Check that the audio cables to your audio source are connected properly</li><li>• Check that the audio source is active and playing</li></ul>
No signal from USB devices	<ul style="list-style-type: none"><li>• Check that the mains supply is switched on at wall socket</li><li>• Check that the power switch at the amplifier base panel of the active speaker is switched on</li><li>• Check that the USB cables are connected to PC or Notebook correctly</li><li>• Check USB device is active</li></ul>

## WARNING

This product should be switched off when not in use. Leaving the product switched on without the fan running may reduce the life of the product and result in warming.

## SPECIFICATIONS

Output Power	18 Watts x 2
Drive Units	4" x 4 + 1"x 2
Impedance	4 ohms
Frequency response	20Hz - 20 kHz
Separation	>35 dB
Signal/noise Ratio	>80d B
Input Sensitivity (10% THD)	<450 mV
Distortion THD	<0.2%
Dimensions (mm)	820x160x100
Power Supply	230 Volt/ 50Hz

## STANDARDS

- LCE Low Voltage (LVD) Directive and Electromagnetic Compatibility (EMC) Directive
- BS 1363 standard for Electrical Plug alternatively a Europlug to CEE 7/16 plug rated at 3A/220-240V AC
- Restriction of the Use of Certain Hazardous Substances in Electrical and Electronic Equipment Regulations 2005 (RoHS)
- Waste Electrical and Electronic Equipment (WEEE) Directive (2002/96/EC).